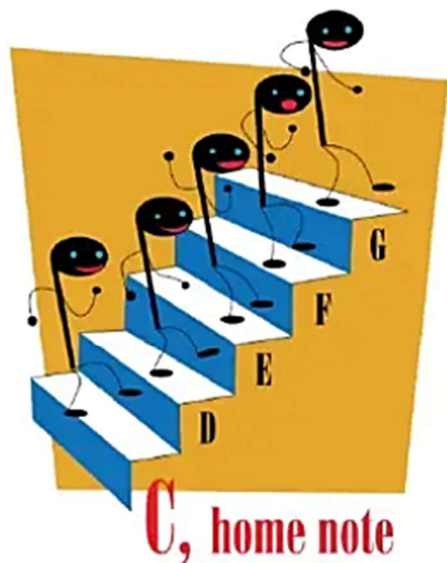
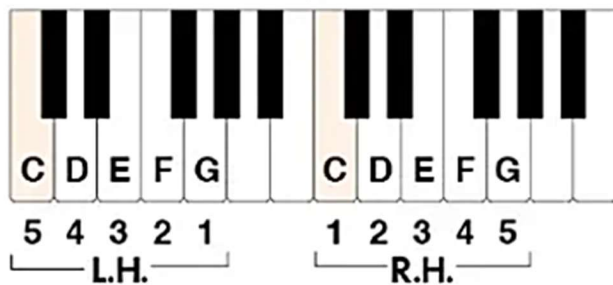


In music, a **scale** is like a set of stairs that steps UP or DOWN from one key to the next.

The **C 5-finger scale** steps UP from C. C is the LOWEST note for each hand.

C is the “home note.”

C 5-Finger Scale



C-D-E-F-G March

Which hand begins? _____

| | | | | | | | | | | | | | | |
|----------|---|-----|------|----|-----|---|----|------|-----|------|------|------|------|----|
| | C | D | E | F | G | G | G, | Step | to | home | note | C | C | C. |
| L.H. | | | | | | | | | | | | | | |
| <i>f</i> | 5 | 4 | 3 | 2 | 1 | | | 1 | 2 | 3 | 4 | 5 | | |
| | | | | | | | | | | | | | | |
| R.H. | | | | | | | | | | | | | | |
| <i>p</i> | 1 | 2 | 3 | 4 | 5 | | | 5 | 4 | 3 | 2 | 1 | | |
| | I | can | step | so | eas | - | i | - | ly, | Down | to | home | note | C! |



Put your hands in your lap. Your teacher will close his/her eyes. Quickly find a **C 5-finger scale** on the piano with BOTH HANDS and say “ready.” Your teacher will check your position.